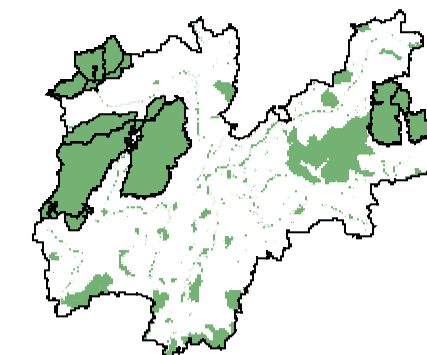




Provincia autonoma di Trento








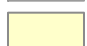


Servizio Sviluppo Sostenibile
e Aree Protette
Ufficio Biodiversità e Rete Natura 2000



Proposta nuovo SIC
IT3120179 denominato "VAL JUMELA"
-
CARTA DEGLI HABITAT NATURA 2000

Legenda

-  Area Proposta SIC (36 ha)
- Habitat Natura 2000**
-  4060 (0,53 ha)
-  6150 (31,56 ha)
-  6230 (2,24 ha)
-  6430 (0,12 ha)
-  7140 (1,65 ha)
-  8110 (0,03 ha)
-  non habitat UE (0,01 ha)

1:3.000



A cura di:

