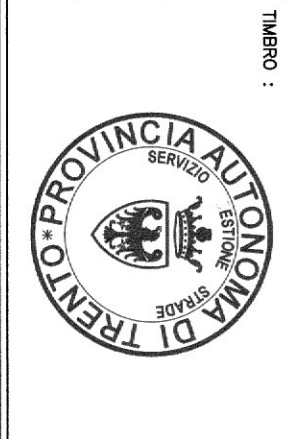


LAVORI DI ZONING URBANO PER LA ZONAZIONE DELLA CANTIERA DI
 SOSTITUZIONE E RISTRUTTURAZIONE DELL'EDIFICIO
 TRAI LA PER. 1308 E PER. 1309 CON LA PER. 1307 CON LA
 VILLA PAVANELLA.

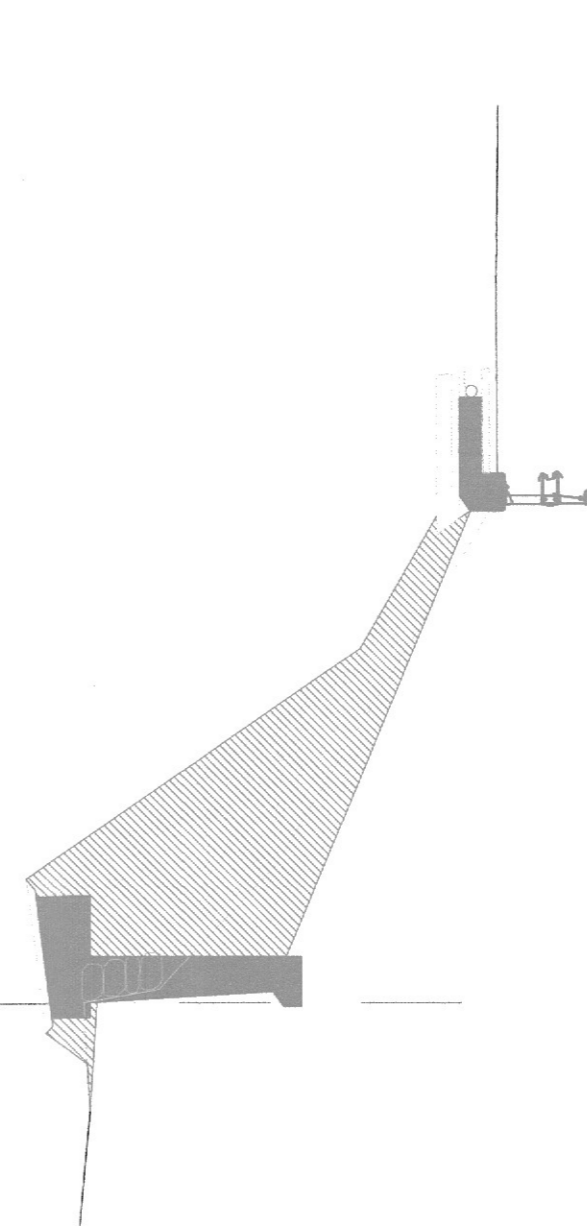
PROGETTO DI:
 Ing. **Roberto Calchi**

SEZIONI
 scala: 1:25
 DATA: MARZO 2005

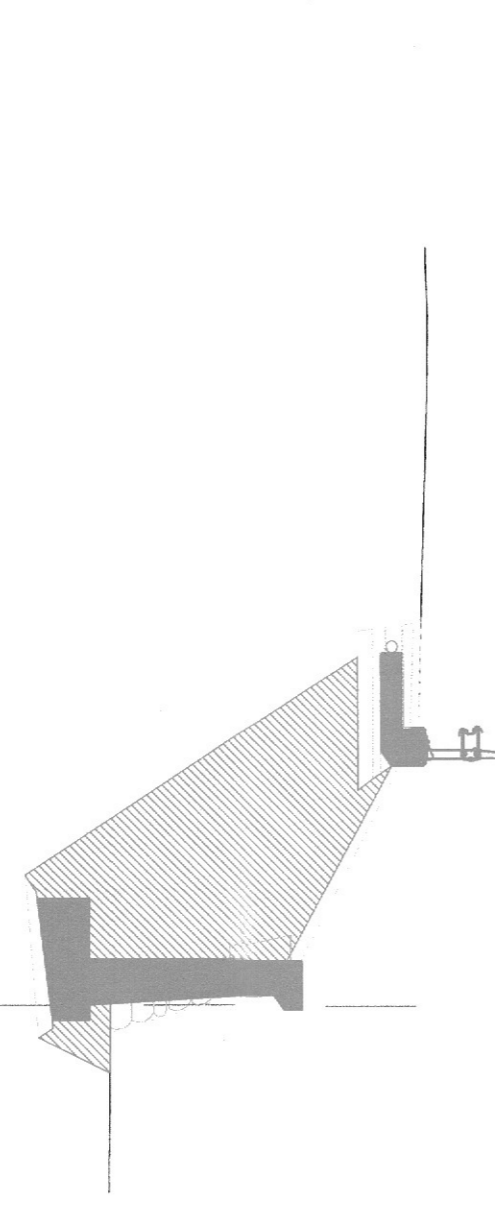
IN CARICAMENTO:
 Ing. **Giulio Antonini**
 Ing. **Massimo**
 Ing. **Sergio**



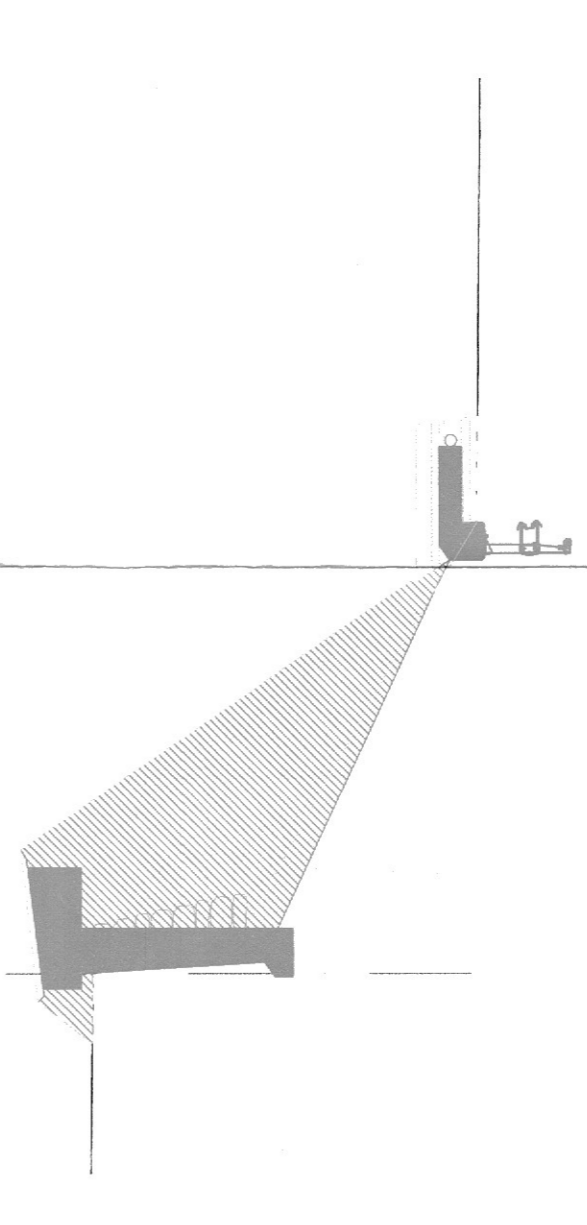
SEZIONE N. 1
 DIST. PROSP. 1:200
 DIST. SECC. 1:200
 AREA SCALFO mq. 124
 AREA IMPERTO mq. 110,34x11,12



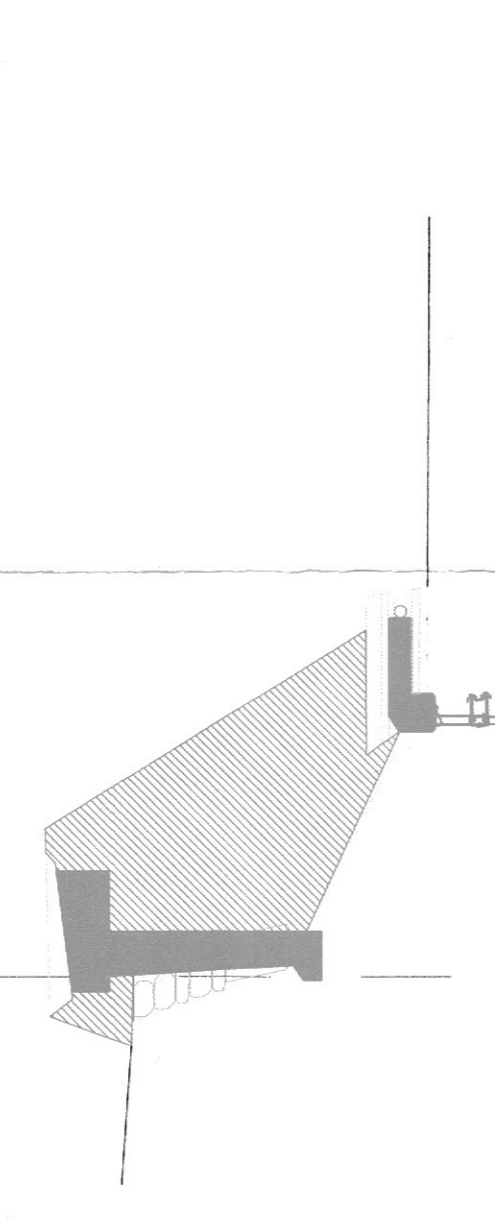
SEZIONE N. 8
 DIST. PROSP. 1:200
 DIST. SECC. 1:200
 AREA SCALFO mq. 81,0
 AREA IMPERTO mq. 82,44x10,22



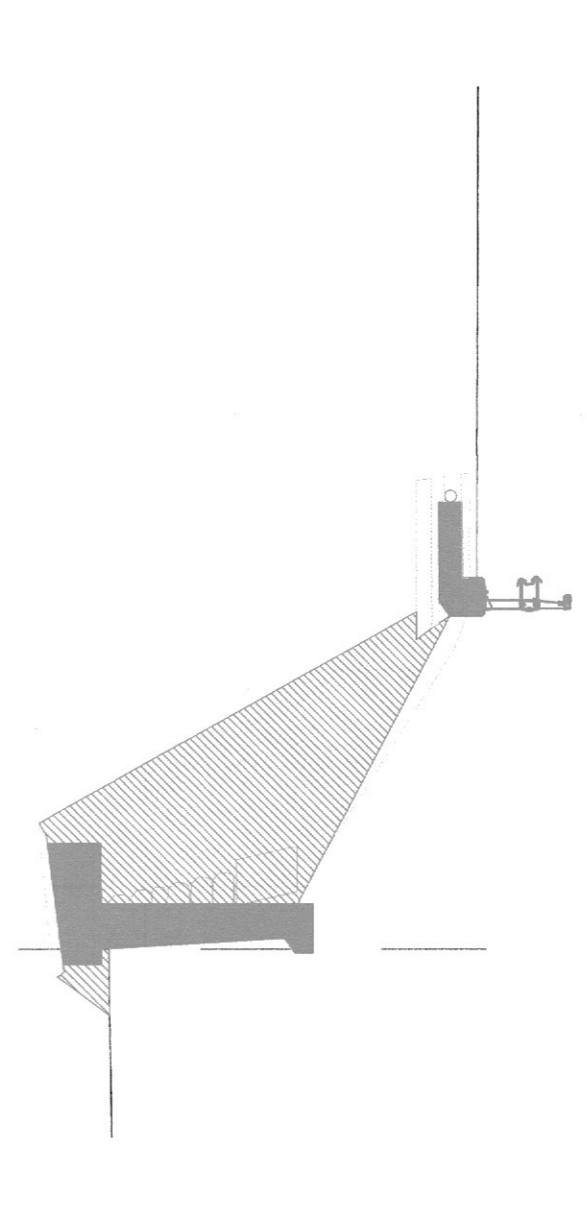
SEZIONE N. 2
 DIST. PROSP. 1:200
 DIST. SECC. 1:200
 AREA SCALFO mq. 123
 AREA IMPERTO mq. 103,34x11,09



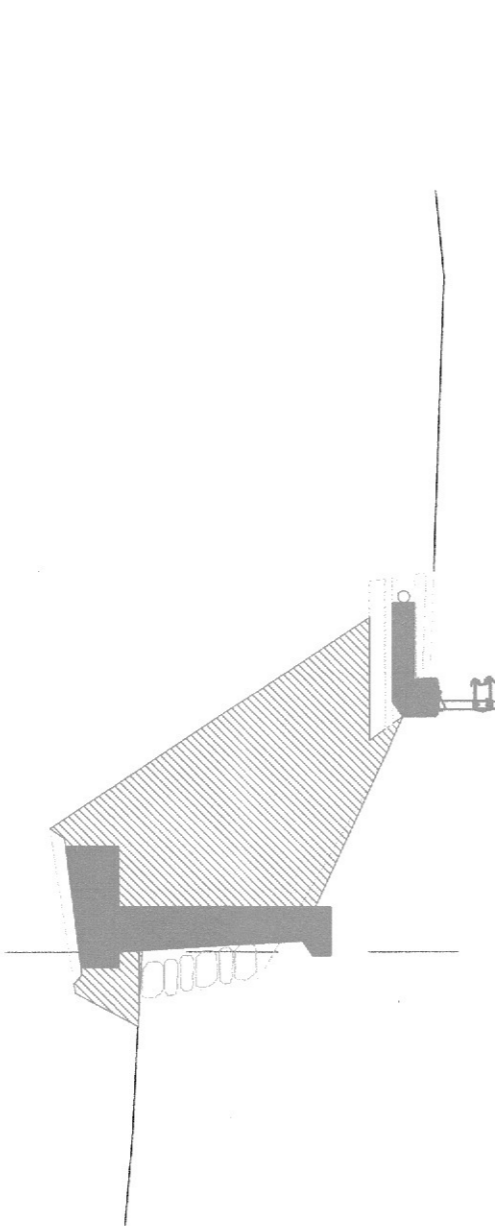
SEZIONE N. 9
 DIST. PROSP. 1:200
 DIST. SECC. 1:200
 AREA SCALFO mq. 88,8
 AREA IMPERTO mq. 110,37x10,88



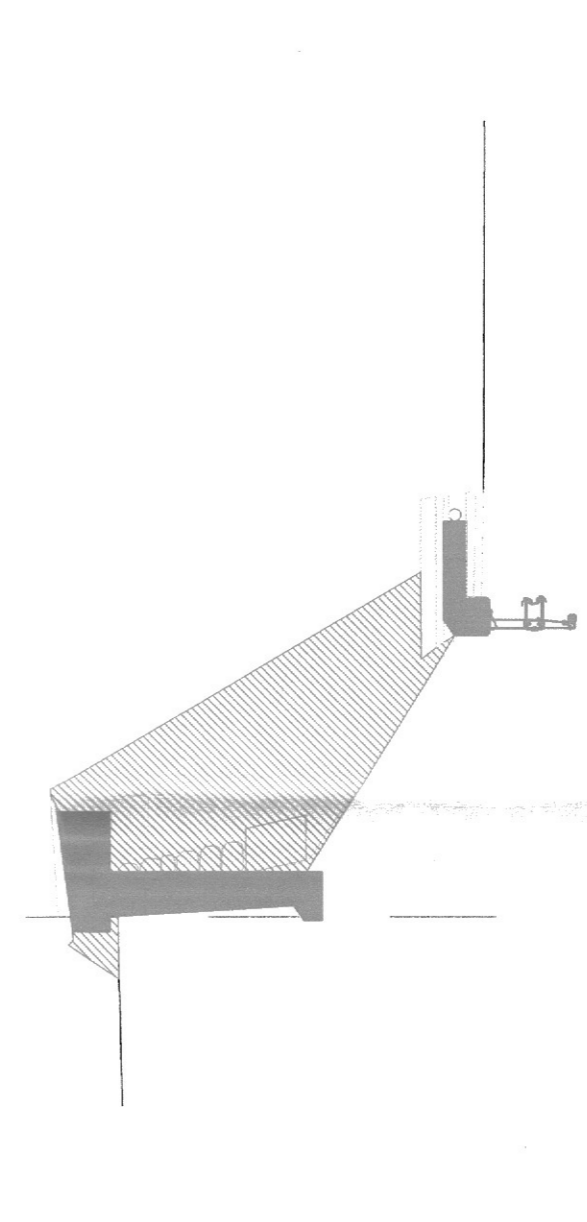
SEZIONE N. 3
 DIST. PROSP. 1:200
 DIST. SECC. 1:200
 AREA SCALFO mq. 128
 AREA IMPERTO mq. 104,32x11,88



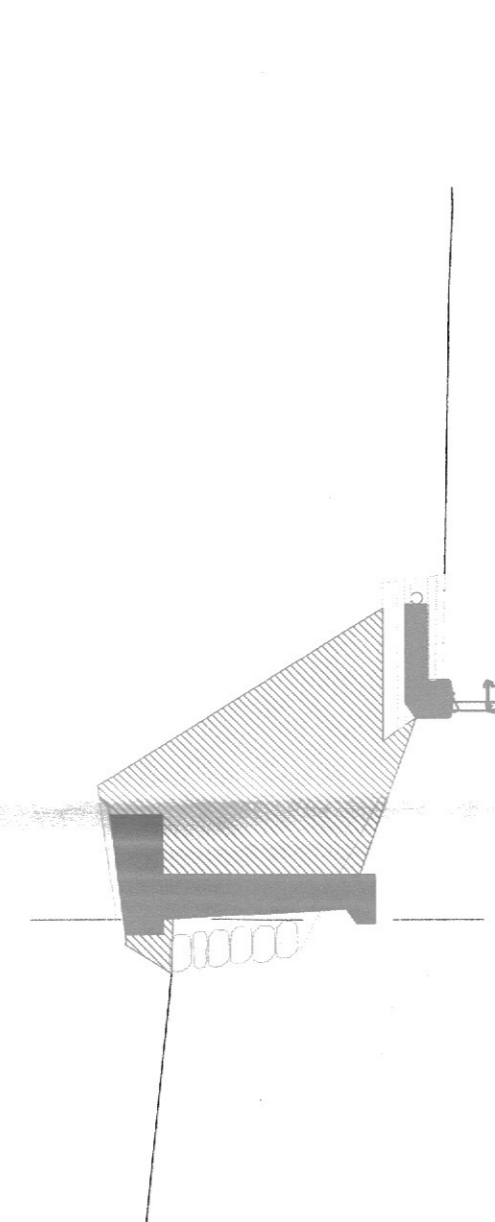
SEZIONE N. 10
 DIST. PROSP. 1:200
 DIST. SECC. 1:200
 AREA SCALFO mq. 147
 AREA IMPERTO mq. 126,32x12,82



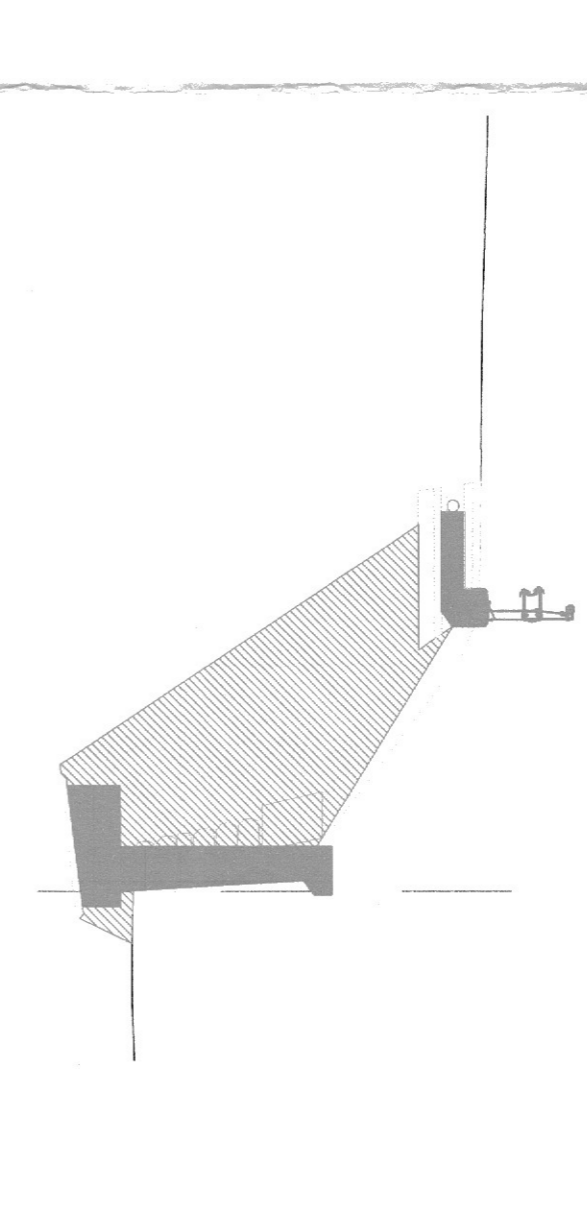
SEZIONE N. 4
 DIST. PROSP. 1:200
 DIST. SECC. 1:200
 AREA SCALFO mq. 124
 AREA IMPERTO mq. 102,37x12,82



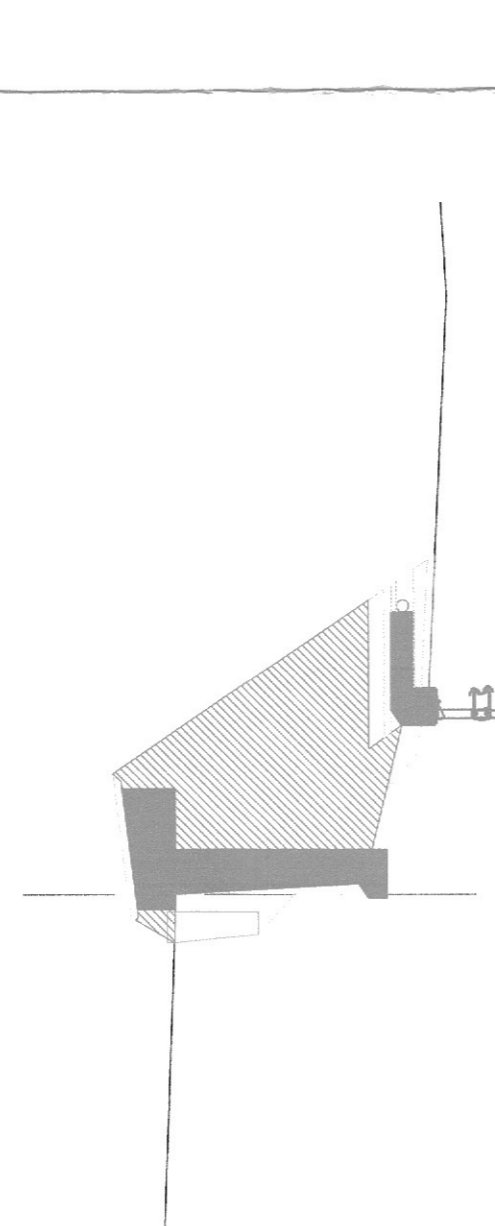
SEZIONE N. 11
 DIST. PROSP. 1:200
 DIST. SECC. 1:200
 AREA SCALFO mq. 124
 AREA IMPERTO mq. 102,37x12,82



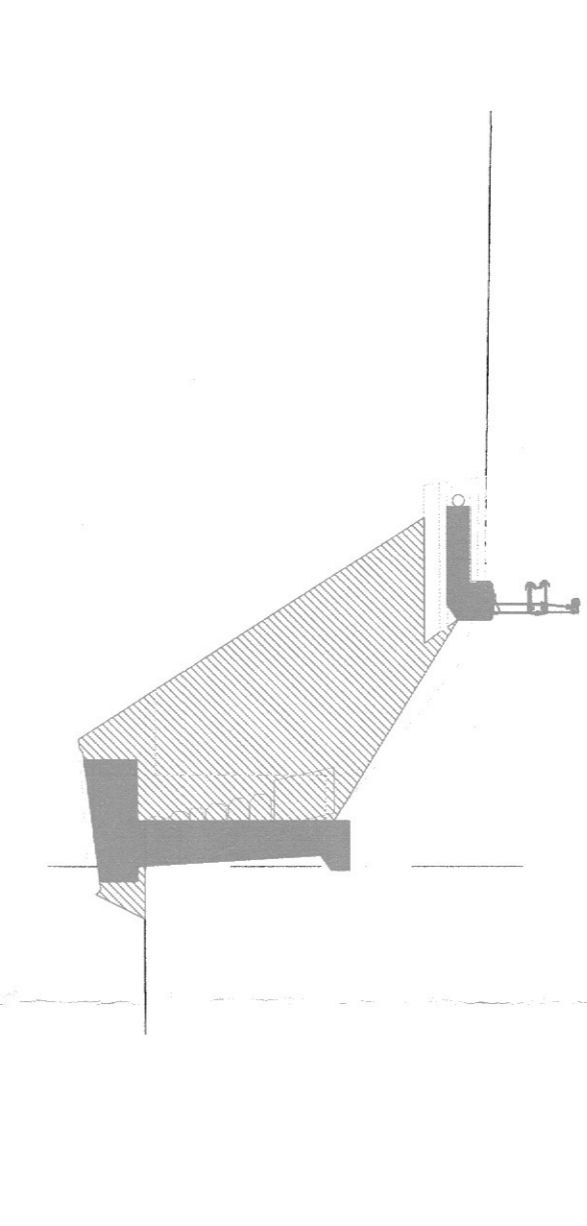
SEZIONE N. 5
 DIST. PROSP. 1:200
 DIST. SECC. 1:200
 AREA SCALFO mq. 84,8
 AREA IMPERTO mq. 104,32x10,83



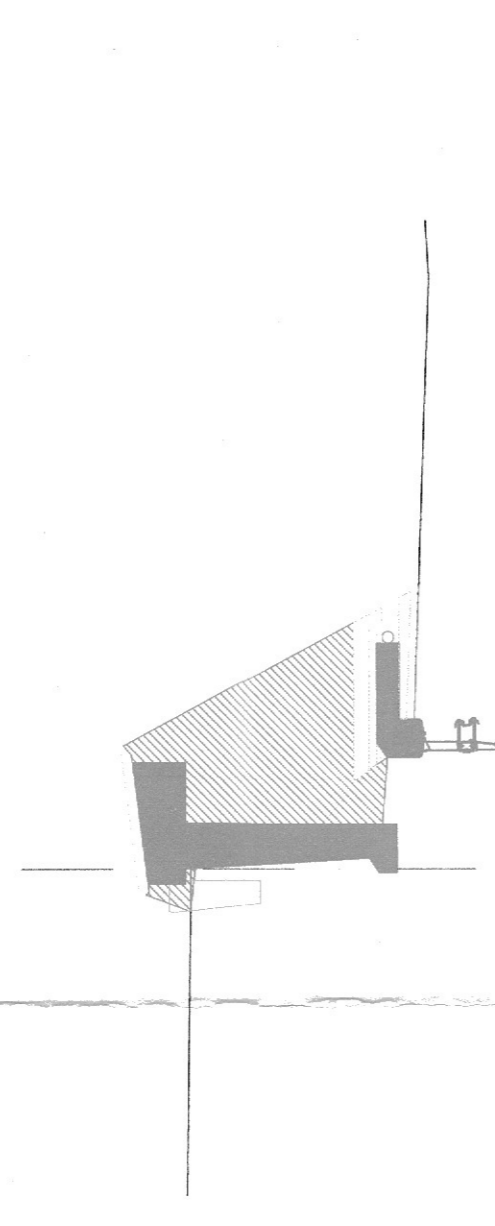
SEZIONE N. 12
 DIST. PROSP. 1:200
 DIST. SECC. 1:200
 AREA SCALFO mq. 119
 AREA IMPERTO mq. 104,37x10,28



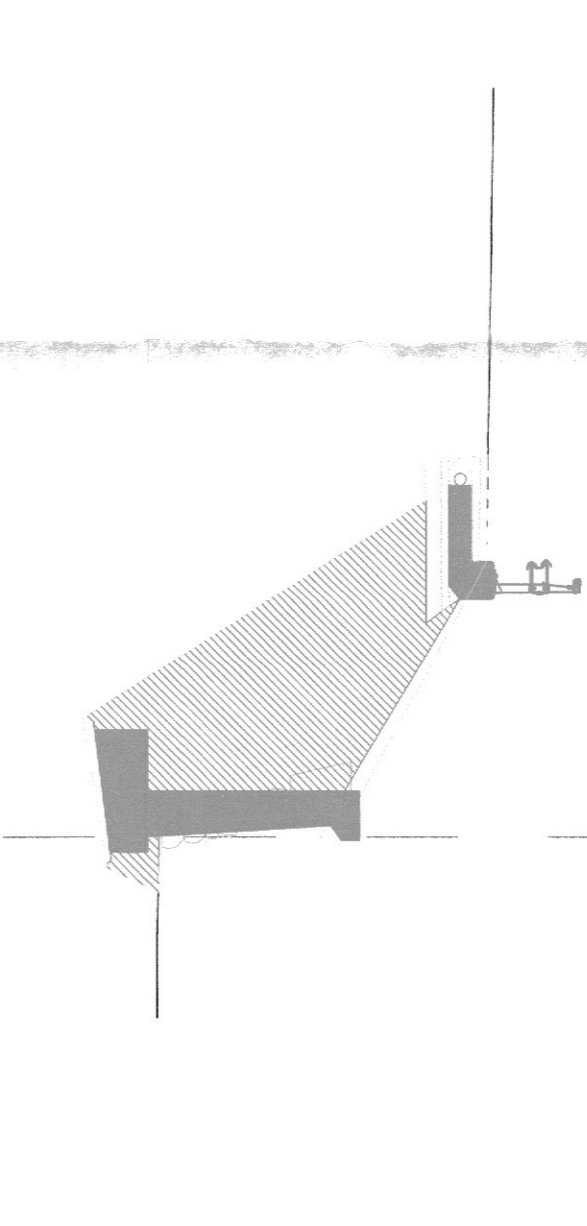
SEZIONE N. 6
 DIST. PROSP. 1:200
 DIST. SECC. 1:200
 AREA SCALFO mq. 128
 AREA IMPERTO mq. 104,32x10,14



SEZIONE N. 13
 DIST. PROSP. 1:200
 DIST. SECC. 1:200
 AREA SCALFO mq. 87
 AREA IMPERTO mq. 104,37x10,48



SEZIONE N. 7
 DIST. PROSP. 1:200
 DIST. SECC. 1:200
 AREA SCALFO mq. 128
 AREA IMPERTO mq. 104,32x11,88



SEZIONE N. 14
 DIST. PROSP. 1:200
 DIST. SECC. 1:200
 AREA SCALFO mq. 78
 AREA IMPERTO mq. 104,32x11,13

