

**PROVINCIA AUTONOMA DI TRENTO**  
 DIPARTIMENTO INFRASTRUTTURE E TRASPORTI  
 SERVIZIO GESTIONE STRADE  
 UFFICIO GESTIONE PER LA ZONA OTSST

Lavori di somma urgenza per il consolidamento della sede stradale della S.S. 42 del Tonale e della Mendola in prossimità della pr. km 194+370 circa, nel Comune di Novella.

SEZIONI TRASVERSALI

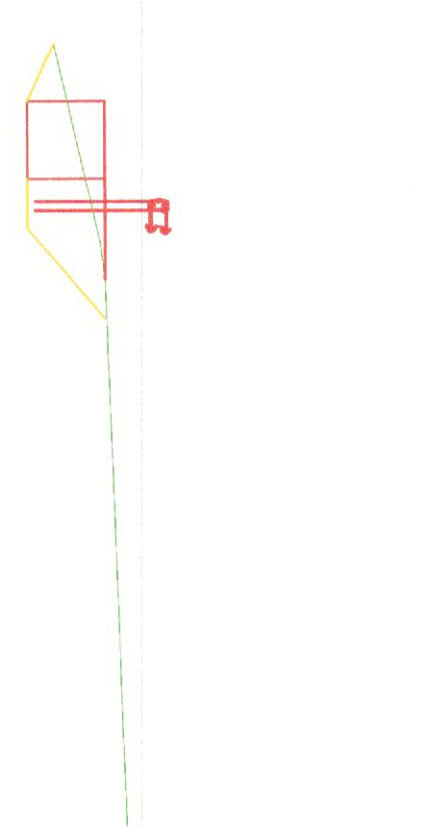
T4

DATA: -- -- 1991, 2025

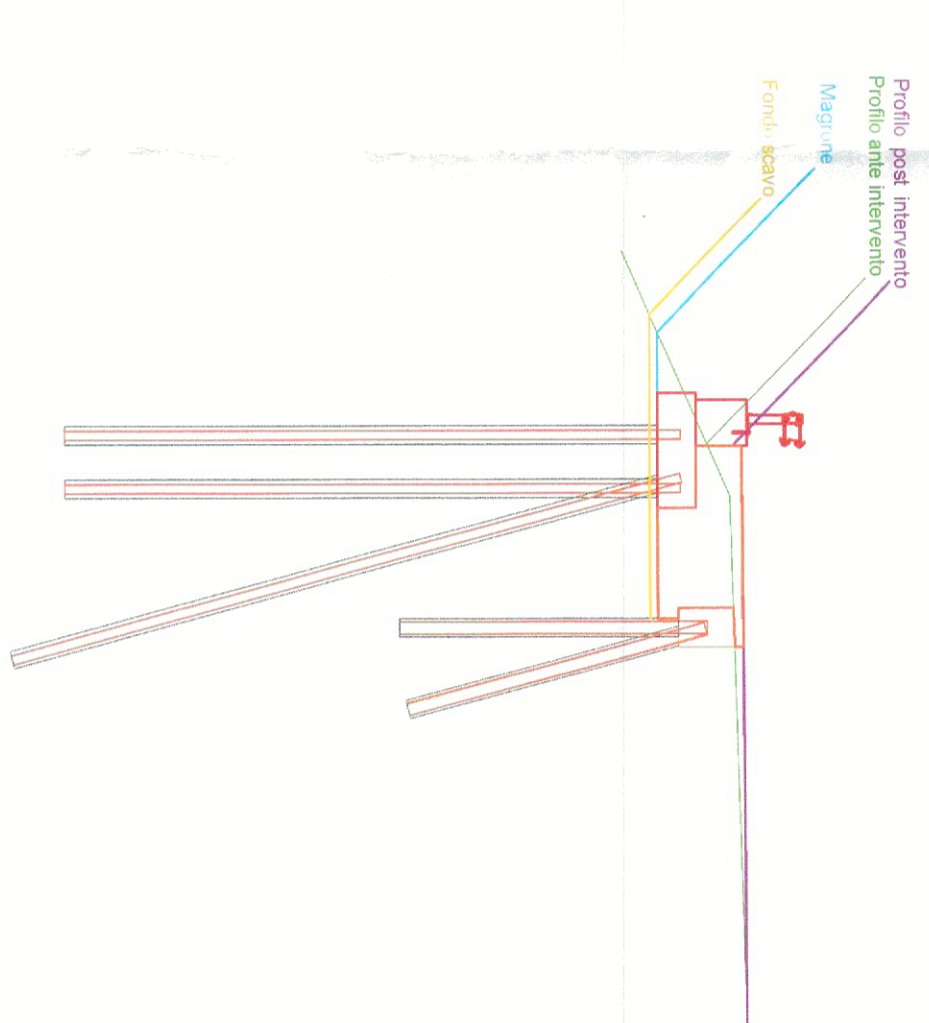
PROGETTISTA: **Studio Claudia Antonucci**  
 INGEGNERE: **Marco L. Sestini**  
 COLLABORATORE: **Matteo Pardi**  
 VERIFICATORE: **Sergio Bernardini**



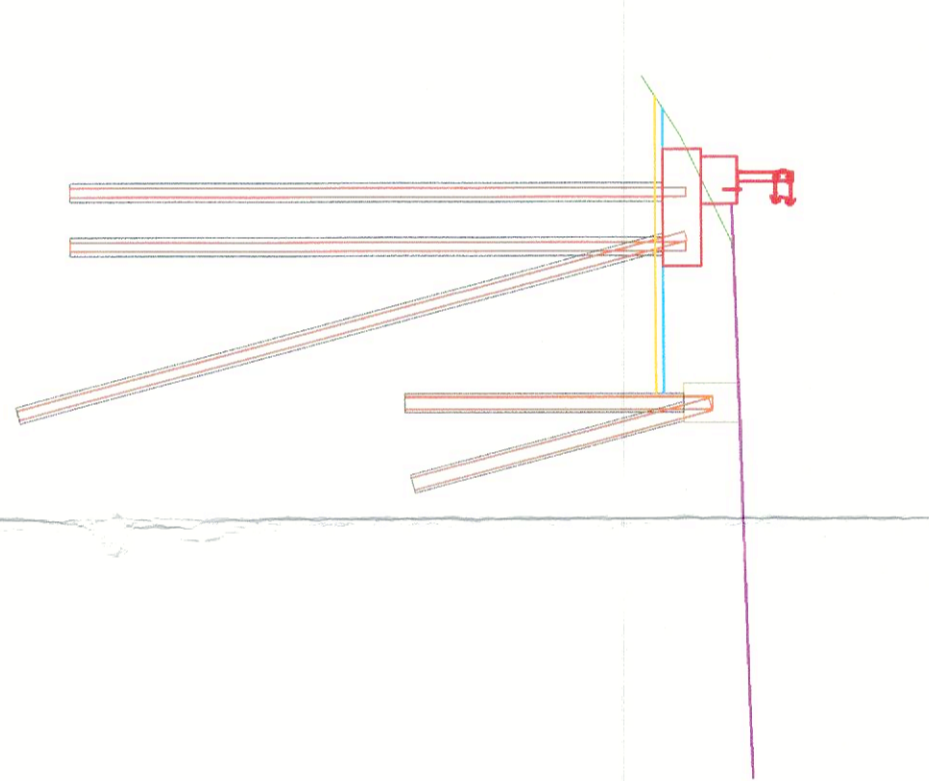
**SEZIONE 2**



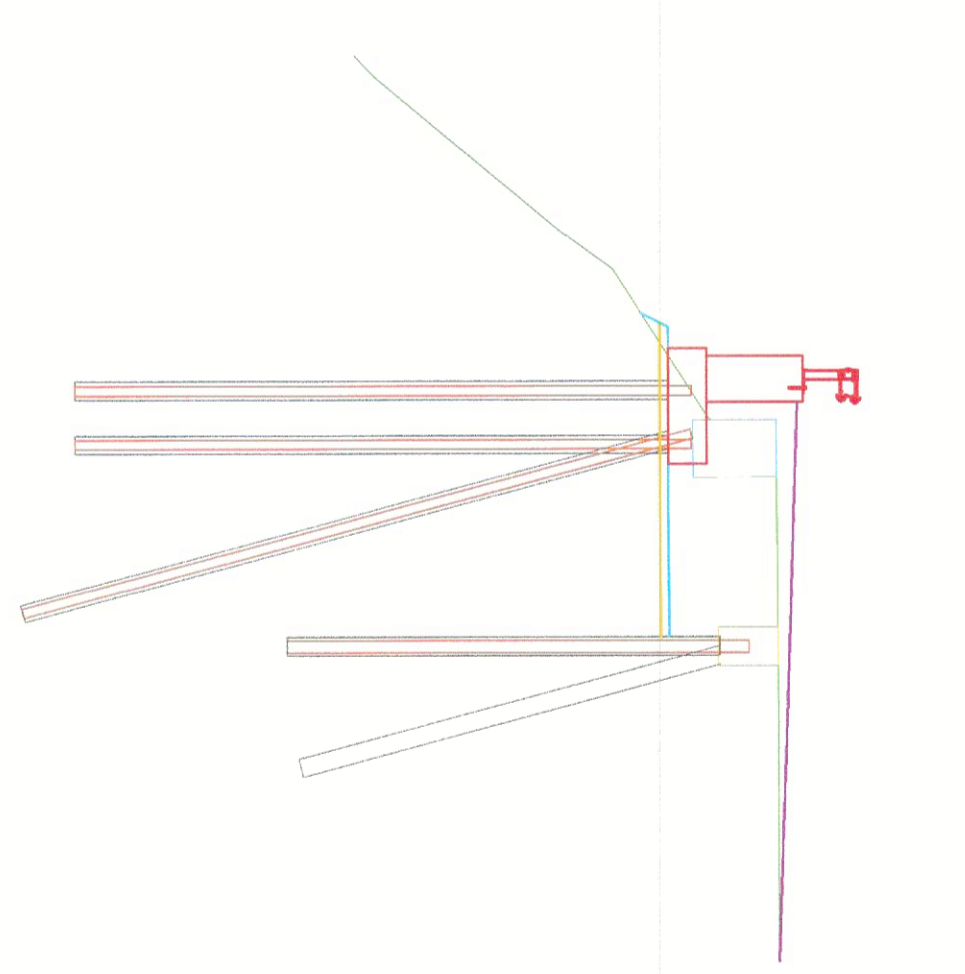
**SEZIONE 3**



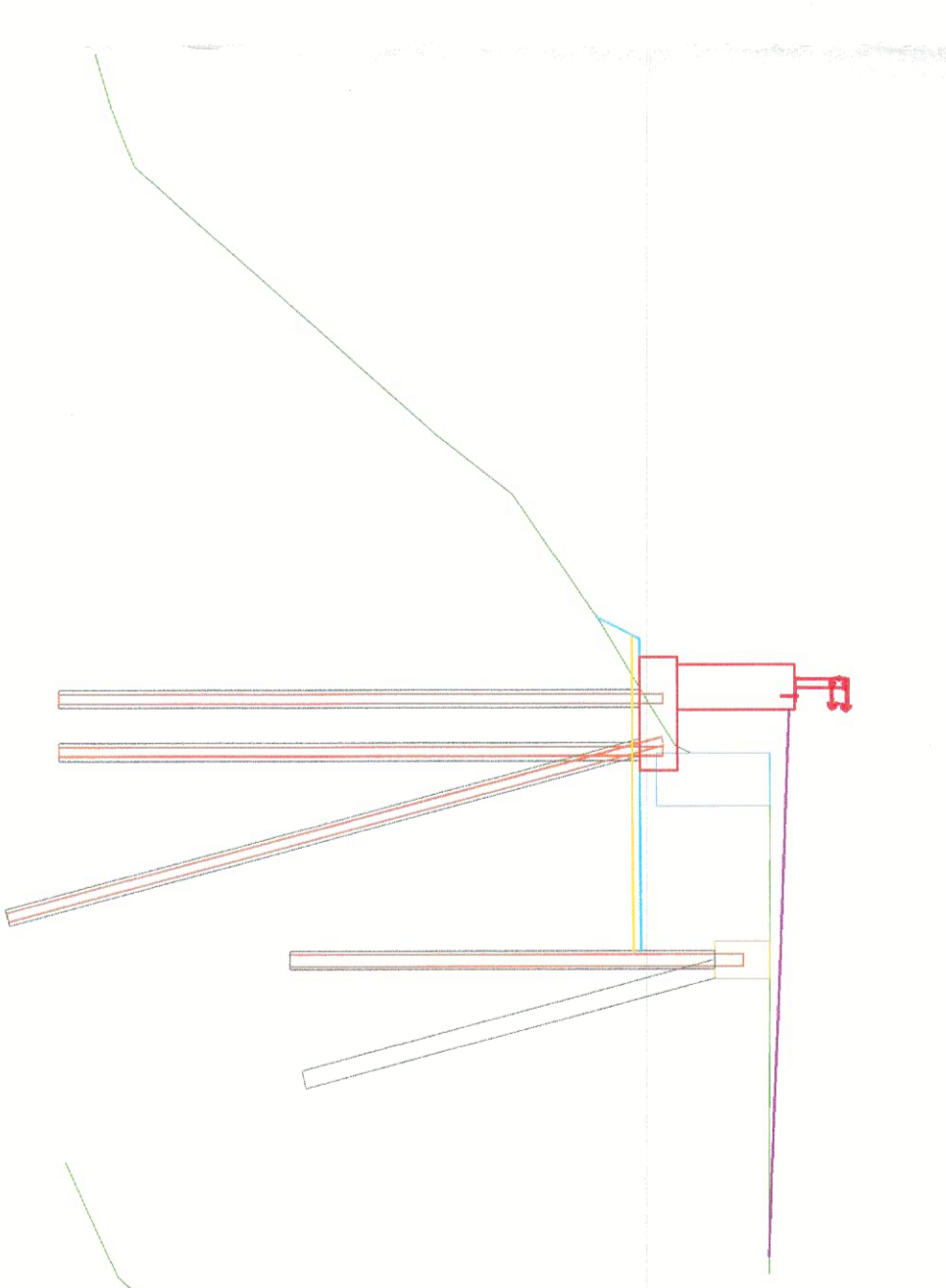
**SEZIONE 4**



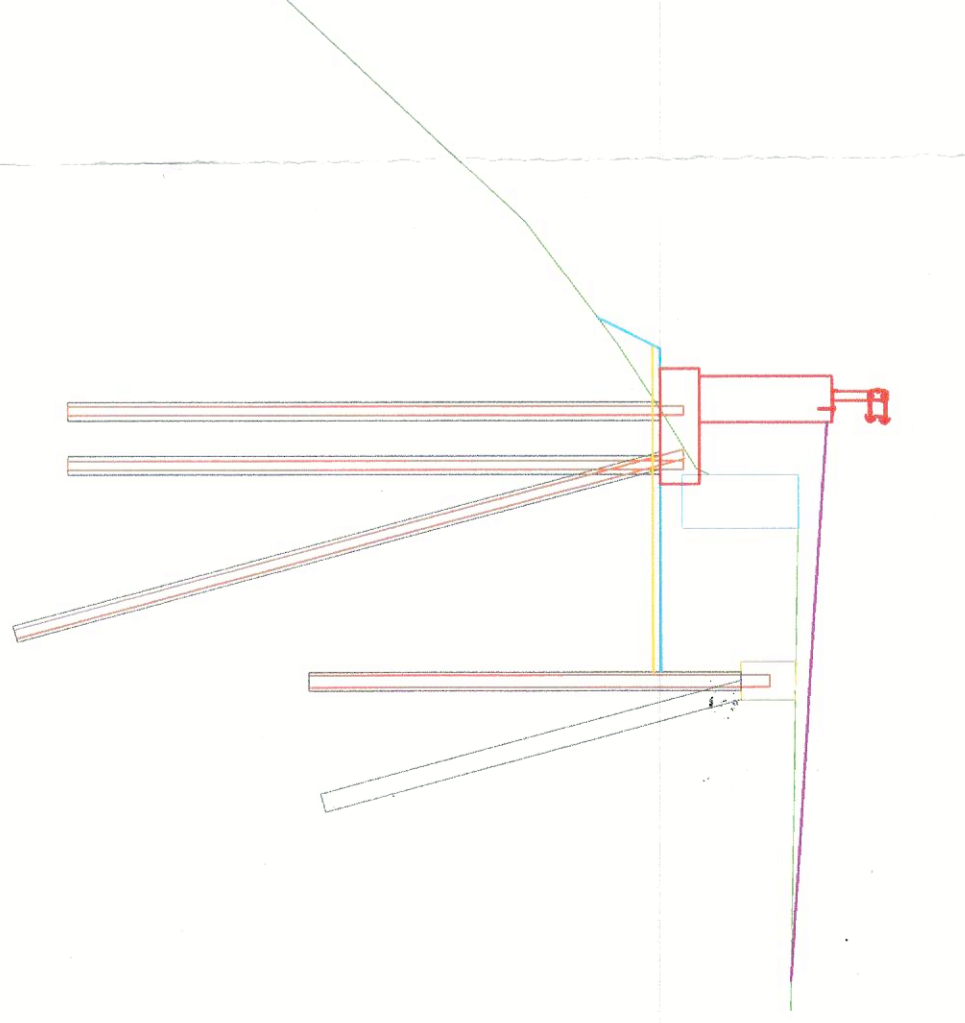
**SEZIONE 11**



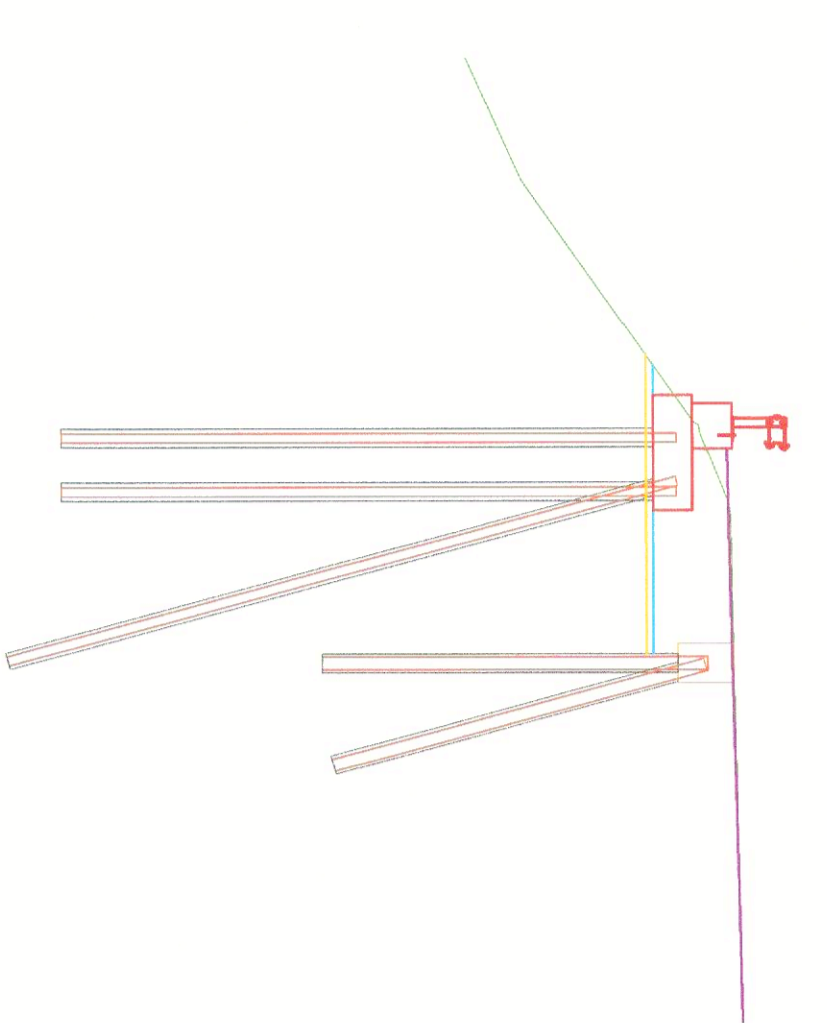
**SEZIONE 12**



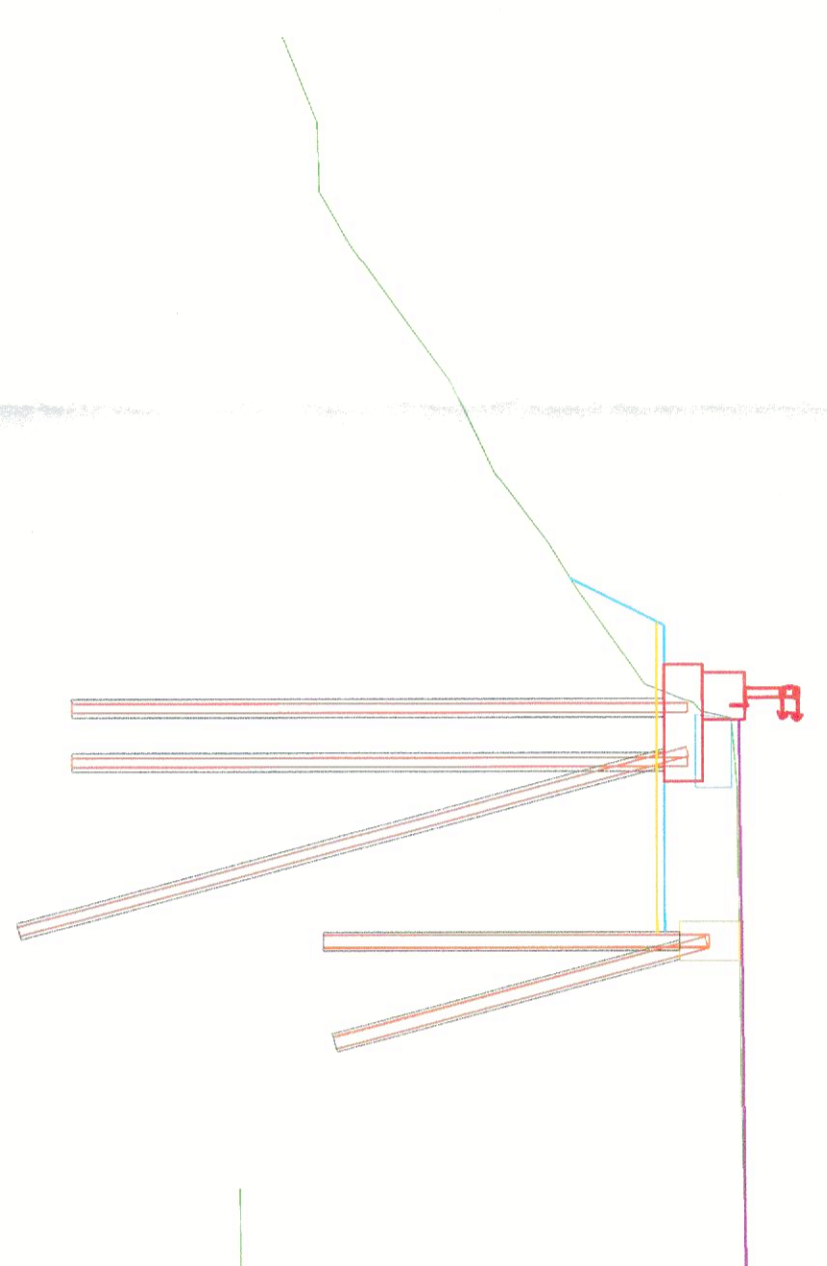
**SEZIONE 13**



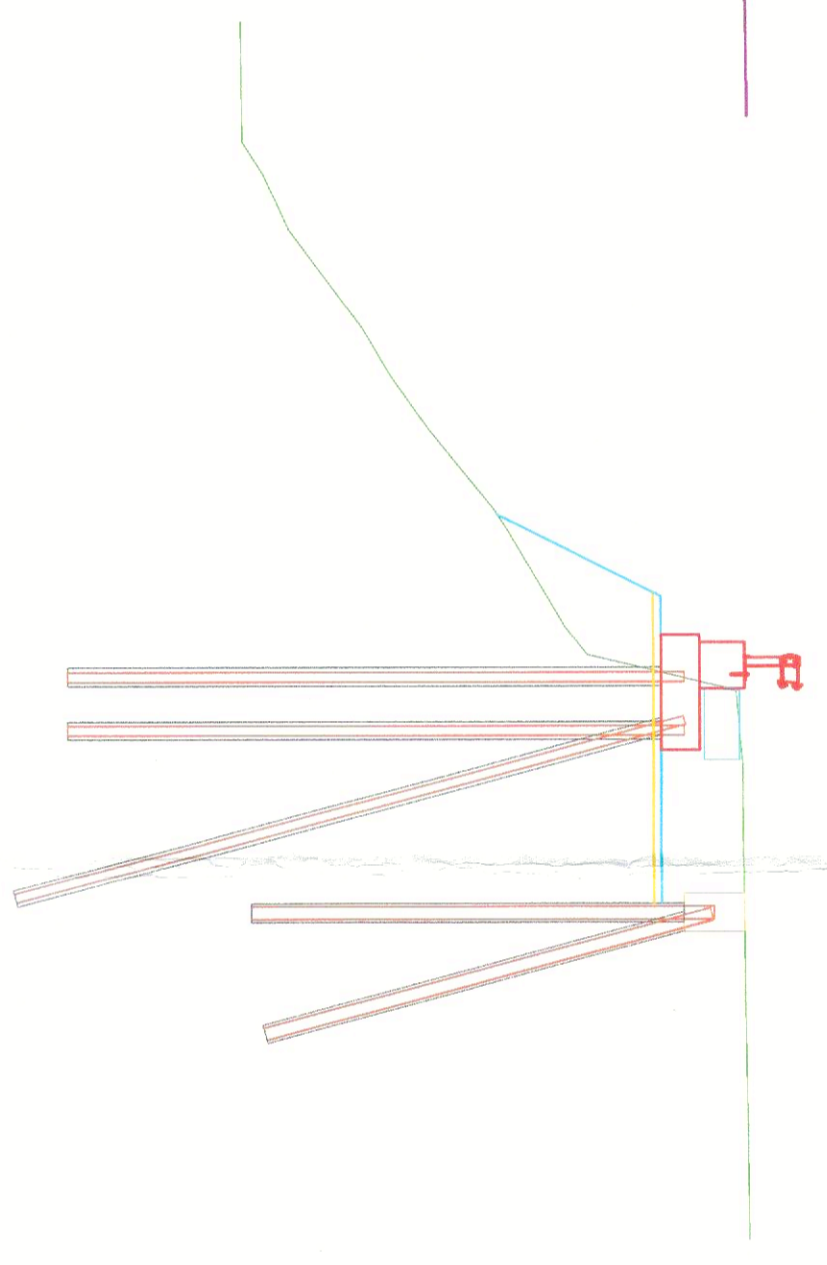
**SEZIONE 5**



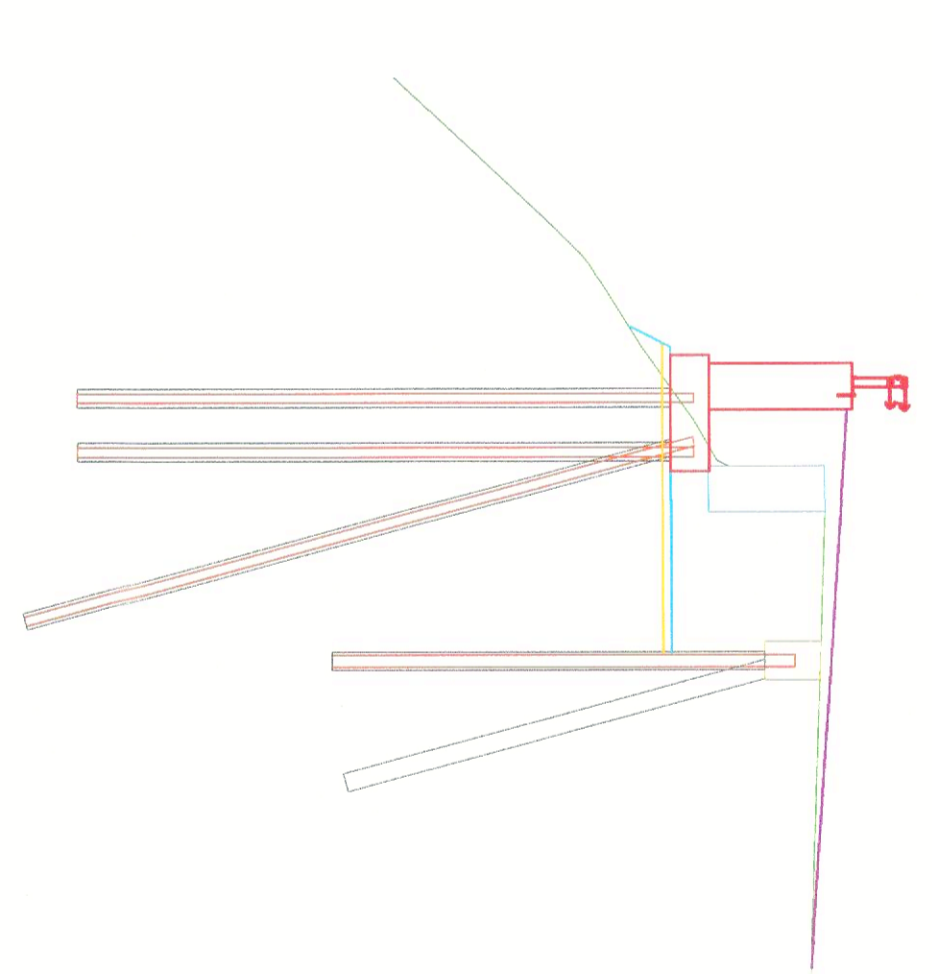
**SEZIONE 6**



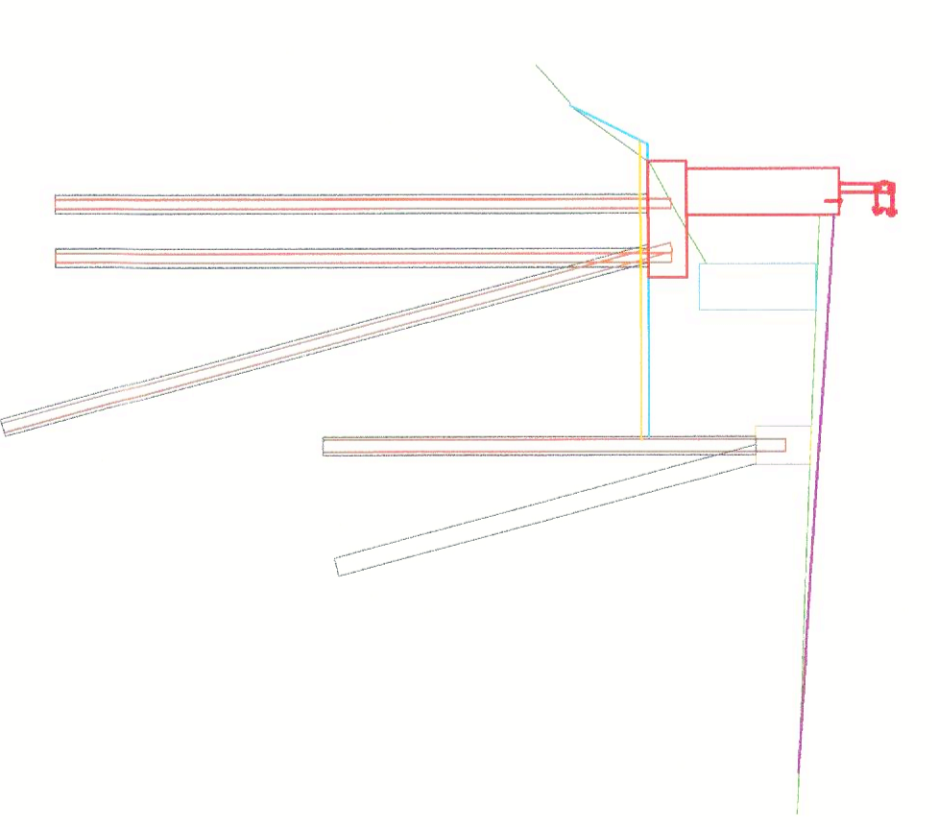
**SEZIONE 7**



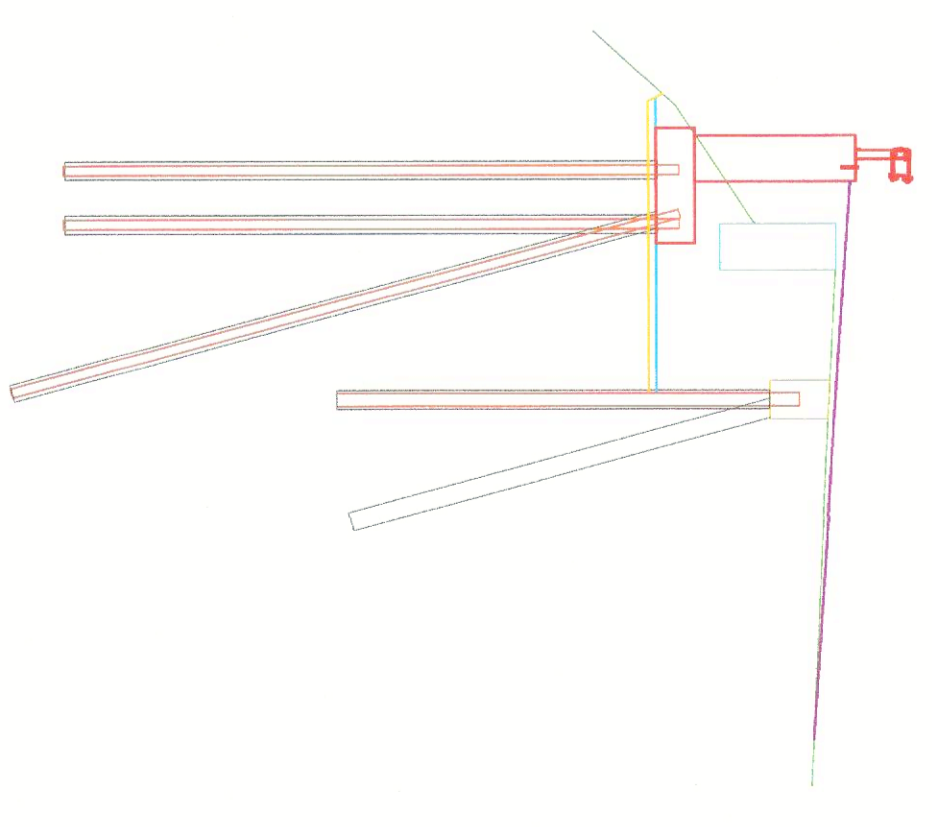
**SEZIONE 14**



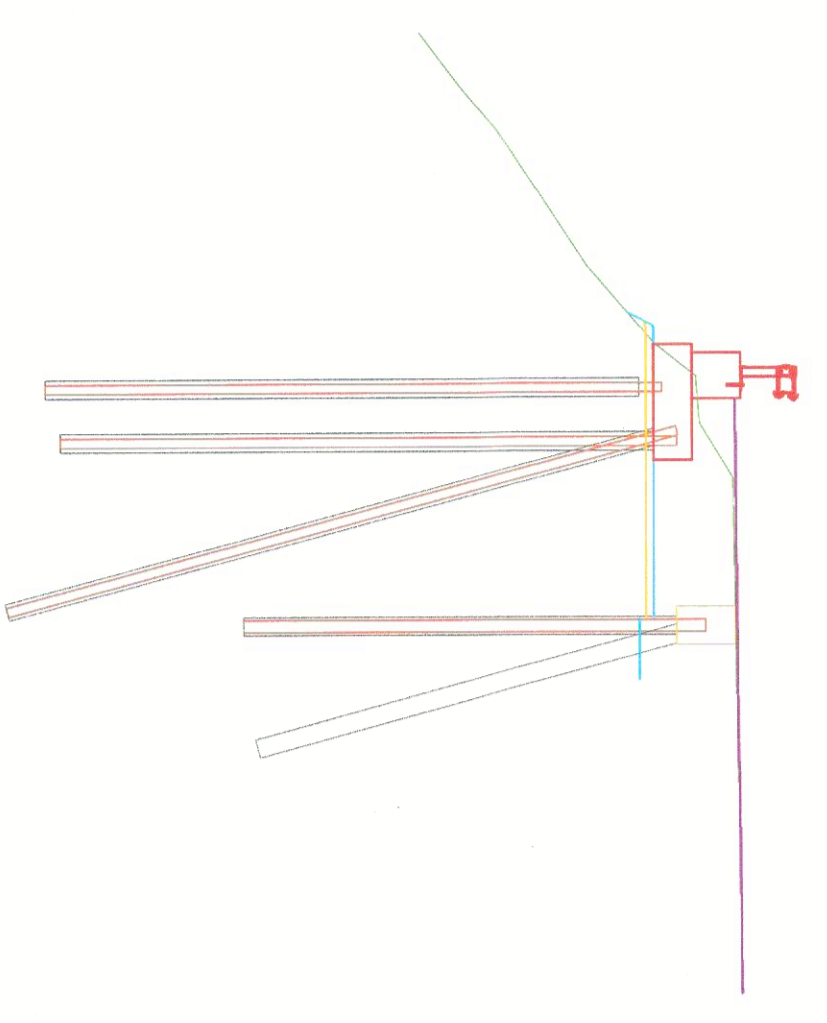
**SEZIONE 15**



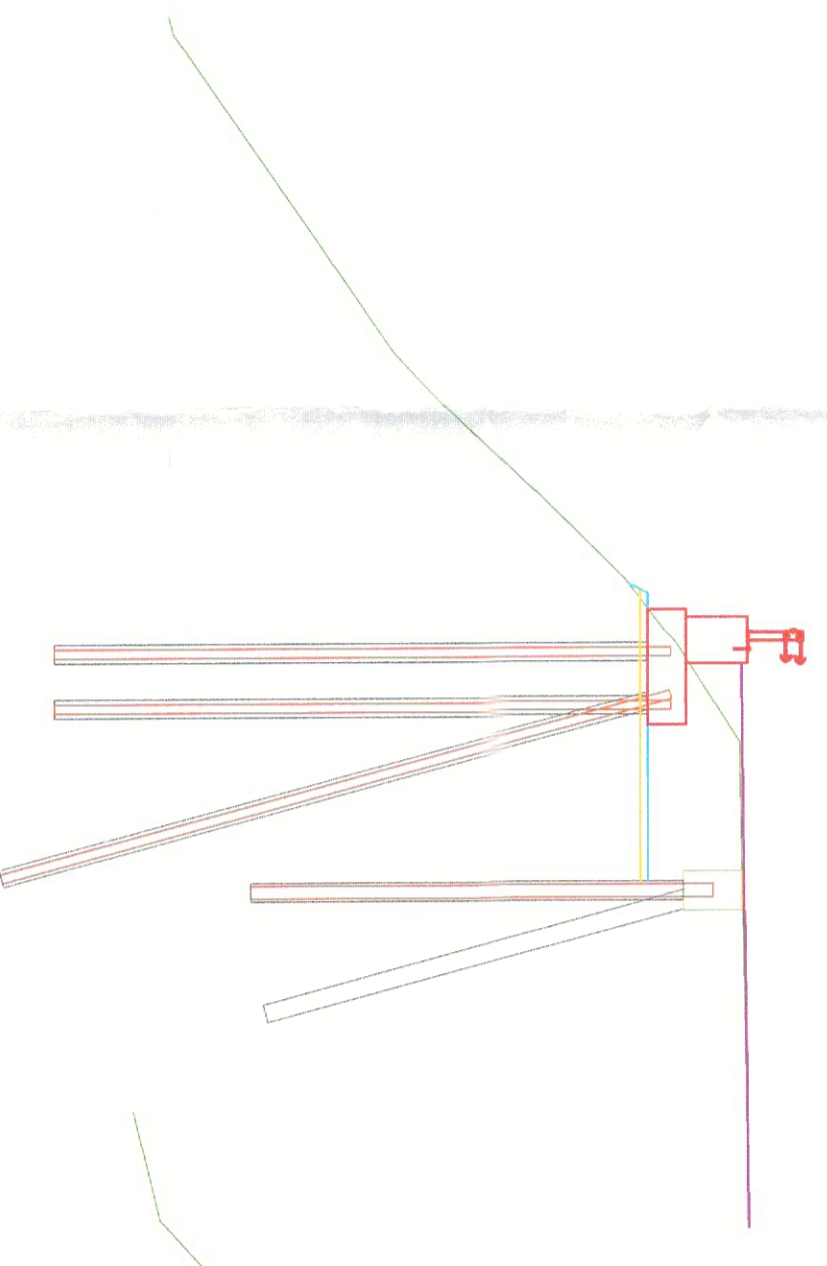
**SEZIONE 16**



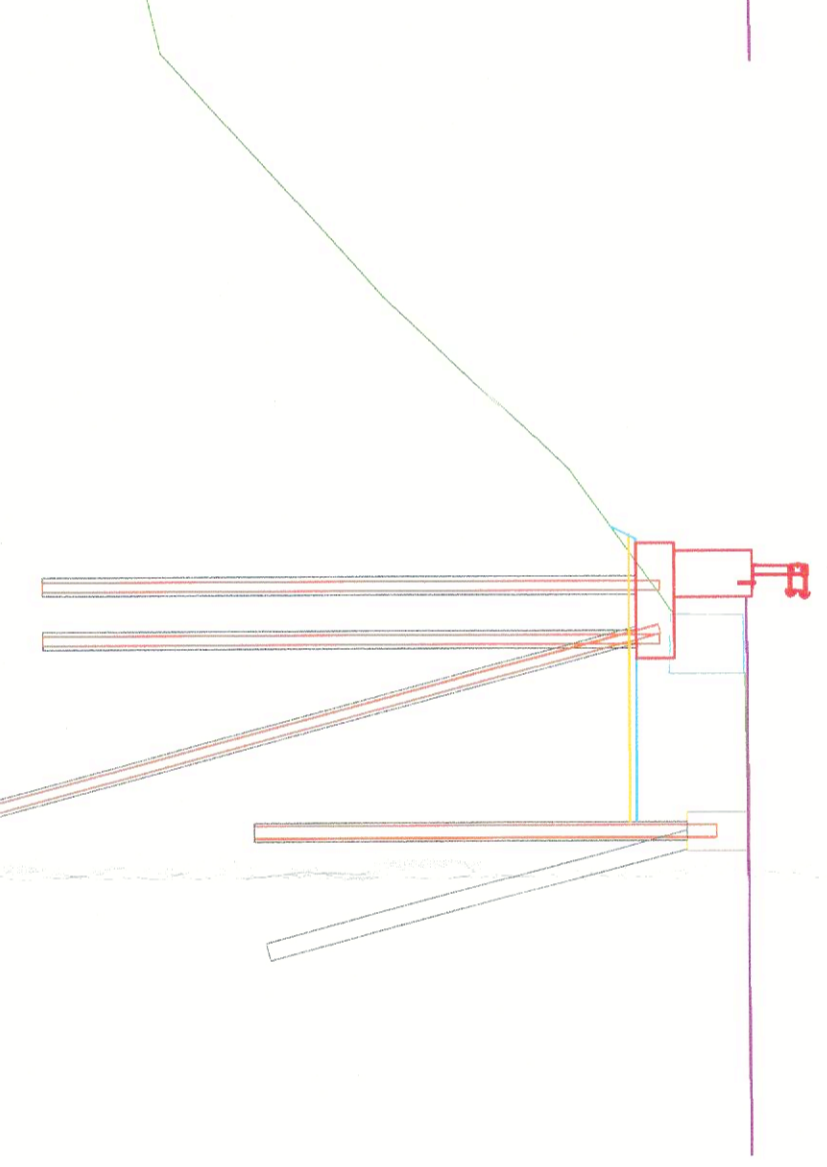
**SEZIONE 8**



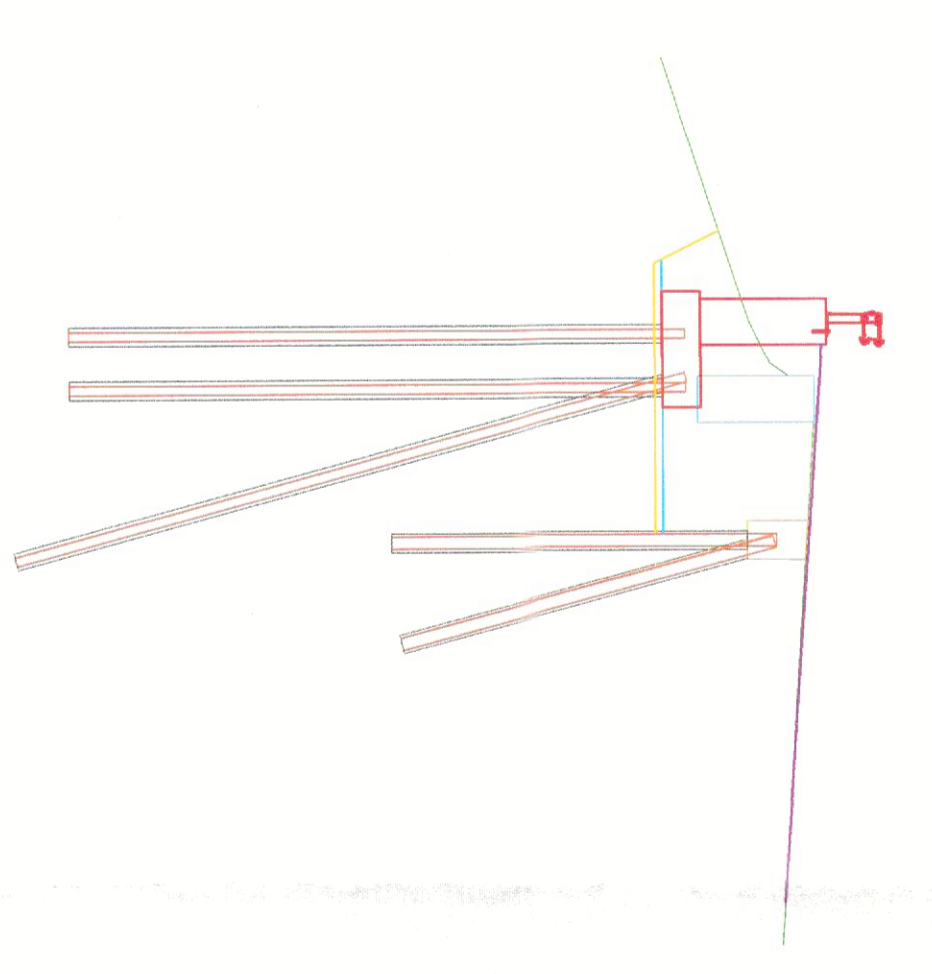
**SEZIONE 9**



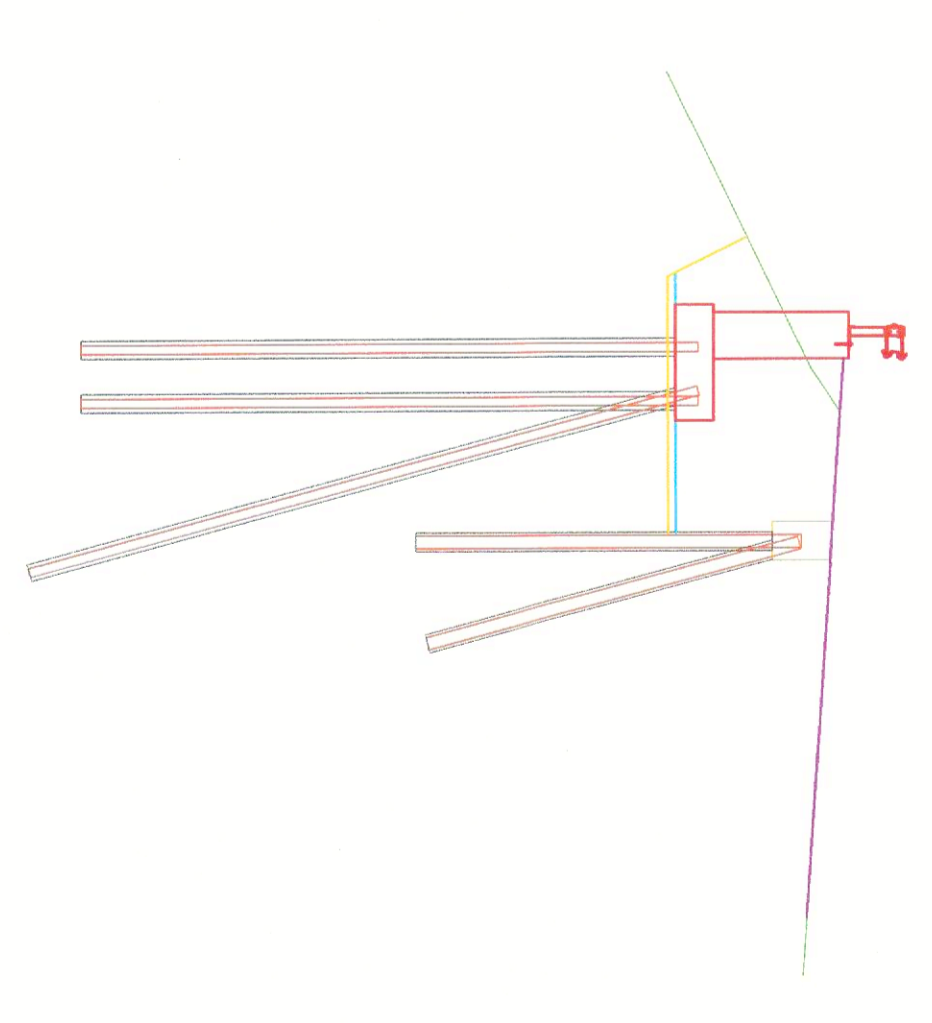
**SEZIONE 10**



**SEZIONE 17**



**SEZIONE 18**



**SEZIONE 18bis**

